



55 Pound OPL Computer Dryer

Parts and Service Manual

For Electric, Gas & Steam Heated Models 50/60 Hz.

Dexter Safety Guidelines



WARNING

The dryer must not be stored or installed where it will be exposed to water and/or weather.

For your safety the information in this manual must be followed to minimize the risk of fire or explosion or to prevent property damage, personal injury or death. Do not store or use gasoline or other flammable vapors and liquids in the vicinity of this or any other appliance.

WHAT TO DO IF YOU SMELL GAS

- Do not try to light any appliance.
- Do not touch any electrical switch: do not use any telephone in your building.
- Clear the room, building or area of all occupants.
- Immediately call your gas supplier from a neighbor's telephone.
- Follow the gas supplier's instructions.
- If you cannot reach your gas supplier, call the fire department. Installation and service must be performed by a qualified installer, service agency or the gas supplier.

To activate your warranty, be sure to return your red warranty form to the factory. Please have serial number and model ready when calling for assistance.

You, the purchaser, must post in a prominent location instructions to be followed in the event the user smells gas. Consult your local gas supplier for procedure to be followed if the odor of gas is present.

Post the following "For Your Safety" caution in a prominent location:

FOR YOUR SAFETY

Do not store or use gasoline or other flammable vapors or liquids in the vicinity of this or any other appliance.

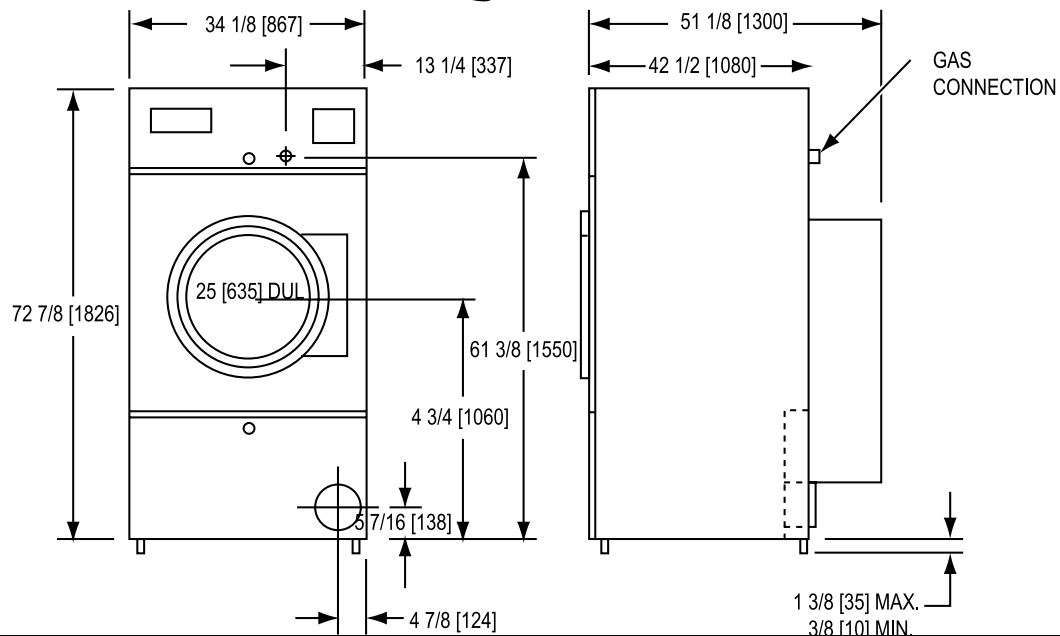
THIS MACHINE IS FOR DRYING ONLY FABRICS CLEANED IN WATER.

To avoid possibility of fire, including spontaneous combustion, do not dry oiled floor mops, items containing foam rubber or similarly textured rubberlike materials or any material on which you have used a cleaning solvent or which contains flammable liquids or solids (such as gasoline, kerosene, waxes, etc.)

Specifications for below models are outlined in this book:

DCWD55HC_-10	Gas Heat	120/60/1
DCWD55HC_16FC	Electric Heater - 24 KW	208/60/3
DCWD55HC_16FE	Electric Heater - 30 KW	208/60/3
DCWD55HC_18FD	Electric Heater - 24 KW	240/60/3
DCWD55HC_FG	Electric Heater - 30 KW	240/60/3
DCWD55HC_10FS	Steam Heat	120/60/1
DCWD55HC_59	Gas Heat	230/50/1

Mounting Dimensions



Section 1: Specifications

Model DCWD55

w/ Microprocessor Control Gas Heat Source

Capacity

Dry Weight Capacity	55 lbs	24.8 kg
Cylinder Diameter	32.5"	82.55 cm
Cylinder Depth	38"	96.52 cm
Cylinder Volume	18.2 cu ft	516.5 dm ³

Dimensions

Cabinet Height (with feet)- Minimum	72.25"	183.52 cm
Cabinet Height (with feet)- Maximum	73.25"	186.06 cm
Cabinet Width	34.4375"	87.47 cm
Overall Depth	51.125"	129.86 cm
Floor to Door Bottom	29.5"	74.93 cm
Door Opening	22.6875"	57.63 cm

Electrical

Electrical Phase	Single
Electrical Voltage (60 Hz)	120 V
Electrical Running Amps (60 Hz)	7.8
Circuit Protection (60 Hz)	15 AMP
Electrical Wire Size	12 Gauge
Electrical Service (Single Phase)	2 wire + ground
Motor Size	3/4 HP .56 kW
Tumble Direction	Counter Clockwise
Tumble Speed	47 RPM

Gas Heat

Gas Input/Hour	160,000 BTU	,320 kcal
Gas Supply Connection (NPT)	1/2"	12.7 mm
Natural Gas Supply (Water Column)	5 -10"	12.7 - 25.4 cm
L.P. Supply (Water Column)	11.0 -13.5"	27.9 - 34.29 cm

Installation

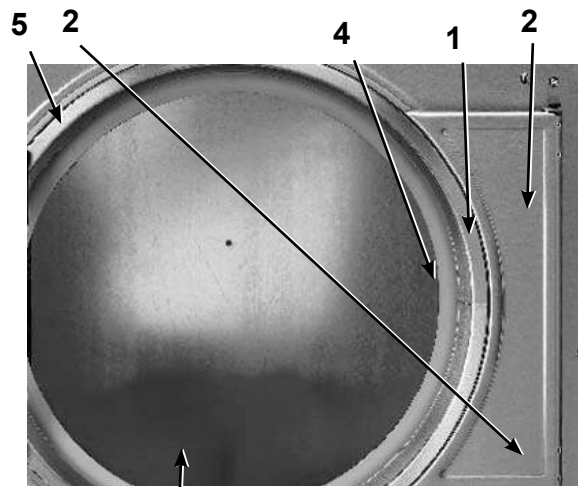
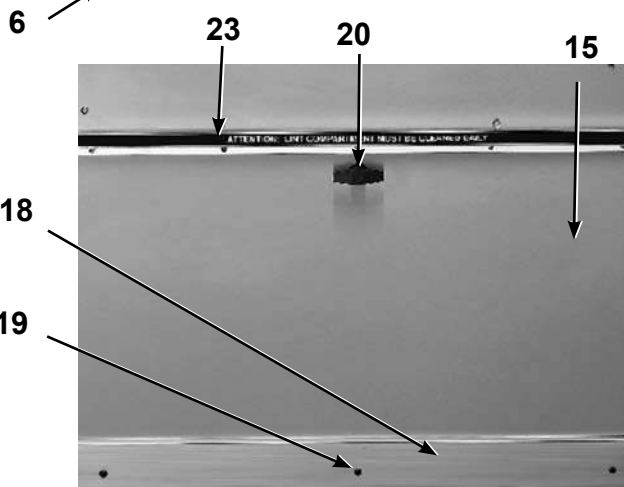
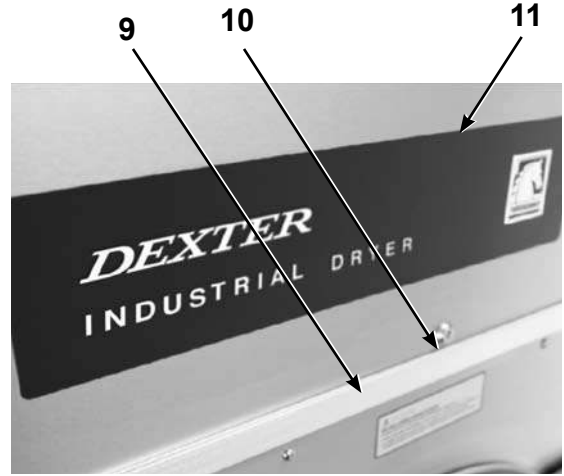
Air Flow	910 CFM	25.77 M ³ /min
Exhaust Size (Vent Diameter)	8"	20.32 cm
Make-Up Air (Minimum)	1.25 ft ²	.12 m ²
Net Weight	581 lbs	262 kg
Clearance Behind Machines (Minimum)	18"	45.72 cm

Section 6:

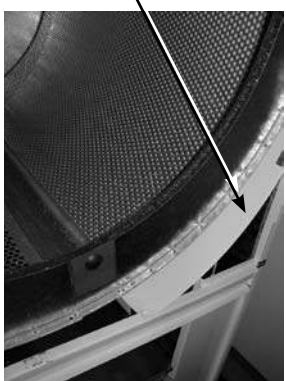
Parts Data

Section 6: Parts Data - Cabinet Group

Key	Part Number	Description	Quantity
*	9960-285-005	Door Assy., Loading Complete-Wht	1
*	9960-285-004	Door Assy., Loading Complete-SS	1
1	9960-284-002	Door Ring ONLY, Loading-SS	1
2	9982-360-003	Plate Assy., Hinge (Wht).....	1
2	9982-360-001	Plate Assy., Hinge (SS).....	1
*	9545-012-015	Screw, Hinge to Door 10-32 x 3/8"	4
*	8640-413-002	Nut, Hinge to Door #10-32 UNF	4
3	9212-002-004	Glass, Door.....	1
4	9206-164-010	Gasket, Glass	1
*	9548-117-000	Support, Door Glass (inside gasket).....	1
5	9206-420-004	Gasket, Outer Rim	1
6	9244-082-001	Handle, Loading Door.....	1
*	9545-018-017	Screw, Handle 1/4"-20 x 3/8"	2
*	9531-033-001	Stud, Door Catch	1
*	8640-413-001	Nut, Hex.....	1
*	8640-413-003	Nut , Acorn # 10-32	1
*	9086-015-002	Catch, Loading Door.....	1
*	8638-190-009	Rivet, Door Latch.....	2
7	9454-809-007	Panel Assy., Front- White	1
7	9454-809-001	Panel Assy., Front- S. Steel.....	1
8	9108-102-001	Door, Upper Service-S.S.....	1
8	9108-102-004	Door, Upper Service-White	1
9	9578-091-003	Trim, Door-Upper Service.....	1
	6292-006-006	Key (only) (FJWCC).....	1
10	8650-006-003	Lock w/ nut, Upper Service Door	1
*	9491-009-001	Rivet, Drive, Upper Door Mounting.....	2
*	8641-581-005	Washer, Flat 3/16" Upper Door Mounting.....	2
*	9548-268-001	Support, Upper Door	1
11	9412-127-001	Nameplate, Commercial Dryer	1
12	9545-012-003	Screw, Chrome 10-32 x 1/2".....	4
*	8641-436-004	Washer, Fiber	4
*	8641-582-019	Lockwasher # 10	10
*	8640-399-001	Nut, Spring U type 10Z.....	6
13	9544-069-002	Strap, Hinge (White)	1
13	9544-069-004	Strap, Hinge (Gray).....	1
*	9545-008-032	Screw, Hinge to Panel 10T-32 x 3/4"	4
14	9545-052-001	Screw, Door to Hinge Strap (special)	1
*	8641-436-003	Washer, Fiber/ Plastic VSCO on Door Hinge (special).....	1
15	9960-280-001	Door Ass'y, Lower Service-SS	1
15	9960-280-003	Door Ass'y, Lower Service-White	1
*	9277-050-001	Insulation Lower Door.....	1
16	9578-088-002	Trim, Door - Lower Service.....	1
23	9435-016-002	Overlay Trim	1
17	9545-008-021	Screw,Pn Hd Cr., #10Bx3/8	5
18	9578-084-003	Trim, Kick- Lower Service Door.....	1
19	9545-008-010	Screw, Tr Hd Cr-#10x1/2 Blk	3
20	9244-084-001	Latch, Lower Door (Handle).....	1
*	8502-617-001	Label - Made in the USA	1
*	9277-051-002	Insulation Side Panel - Lower Service Area	3



Baffle Right



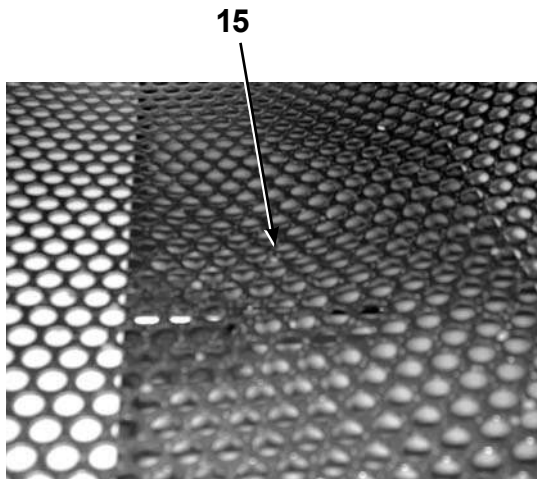
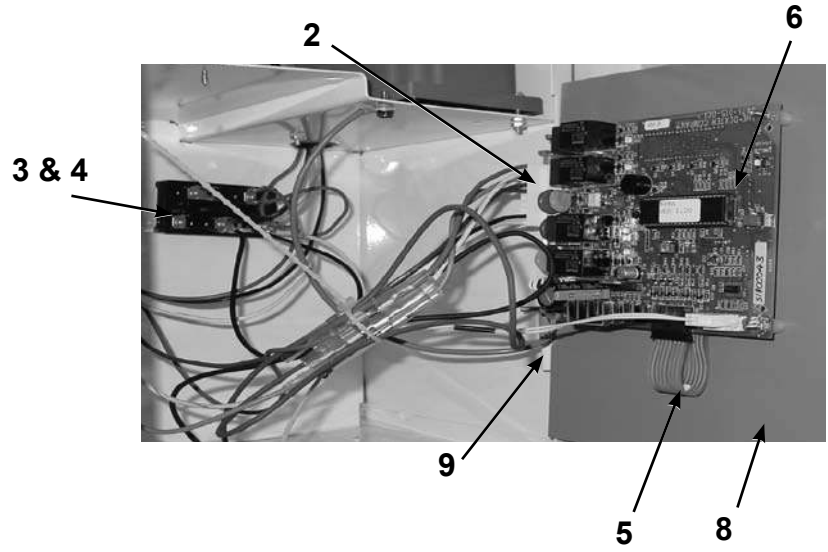
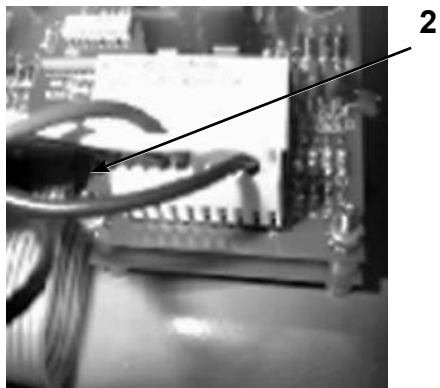
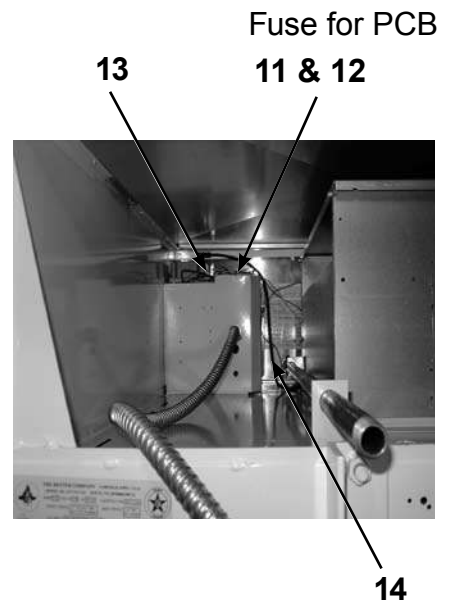
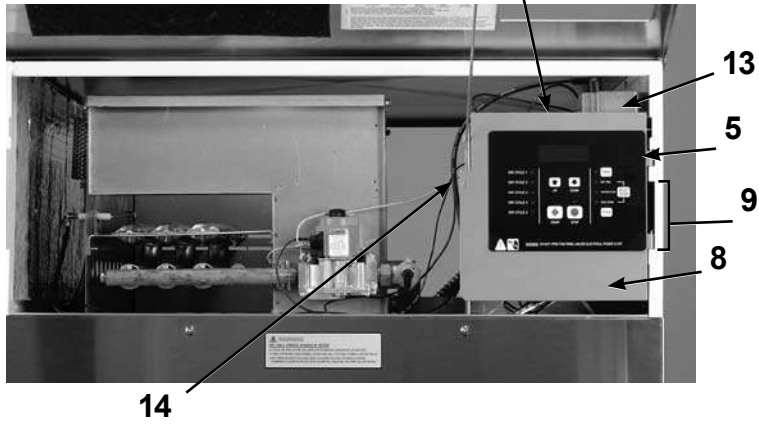
Key	Part Number	Description	Quantity
*	9277-051-001	Insulation Side Panels - Around Basket	6
*	9277-055-002	Insulation Front Panel Bottom	1
*	9277-055-001	Insulation Front Panel Top	1
*	8544-006-001	Leg, Leveling	4
*	9812-012-001	Baffle, Cabinet- Left Inside Cabinet.....	1
*	9812-012-001	Baffle, Cabinet- Right Inside Cabinet	1
*	9545-008-003	Screw, #10x1/2 TEK	8
21	9074-276-001	Cover, Cabinet.....	1
22	9545-008-024	Screw 10AB x 3/8"	10
*	9277-041-003	Insulation	1
*	9277-047-002	Insulation 1/4" black.....	1

* Not Illustrated

Front Control Housing Group

Key	Part Number	Description	Quantity
2	9627-770-001	Wiring Harness Micro	1
3	9897-026-001	Terminal Block Assembly	1
4	9545-031-004	Screw 6AB x 3/8" (for terminal block).....	2
5	9801-085-001	Membrane Switch Assembly	1
6	9732-249-001	PCB Board Controller Kit.....	1
8	9982-326-002	Plate Assembly,Control Mounting.....	1
9	9451-146-005	Pin- Hinge meterplate.....	2
11	9054-045-001	Fuseholder.....	1
*	9545-031-005	Screw - Fuse Holder Mounting	1
12	8636-018-001	Fuse 1.5 amp.....	1
13	9857-116-003	Control, Ignition	1
*	9545-044-002	Screw - Ignition Control Mounting	2
*	8640-411-003	Nut - Ignition Control Mounting.....	2
14	9631-403-003	Wire Ass'y High Voltage (from ignition control)	1
*	8636-024-001	Electronic Control PCB Fuse on PCB .600 MA/250V .	1
15	9501-004-002	Temperature Sensor	1
*	9627-679-002	Sensor Wire Harness	1
*	9029-111-001	Bracket Sensor Mounting	1
*	9545-045-005	Screw Mounting Bracket 8B x 1/4"	1

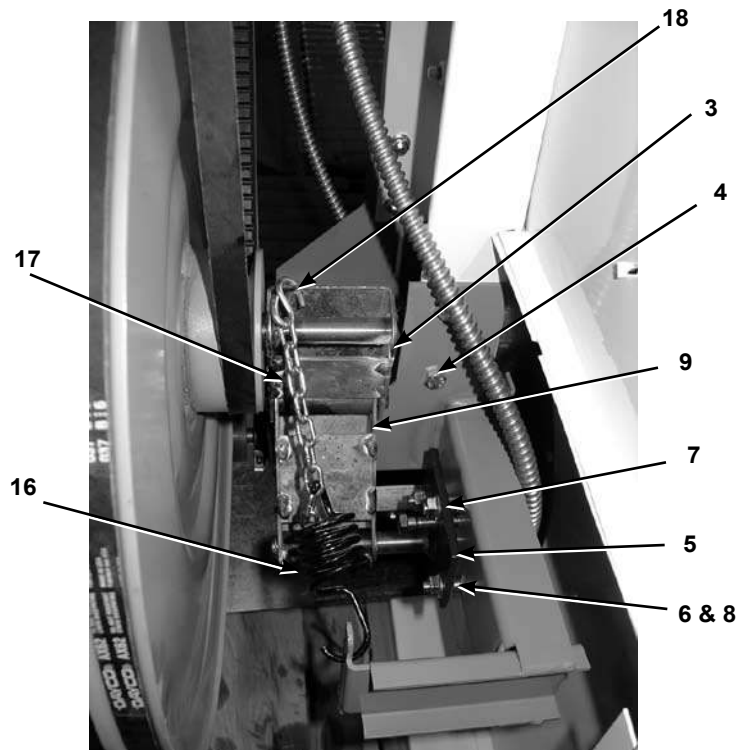
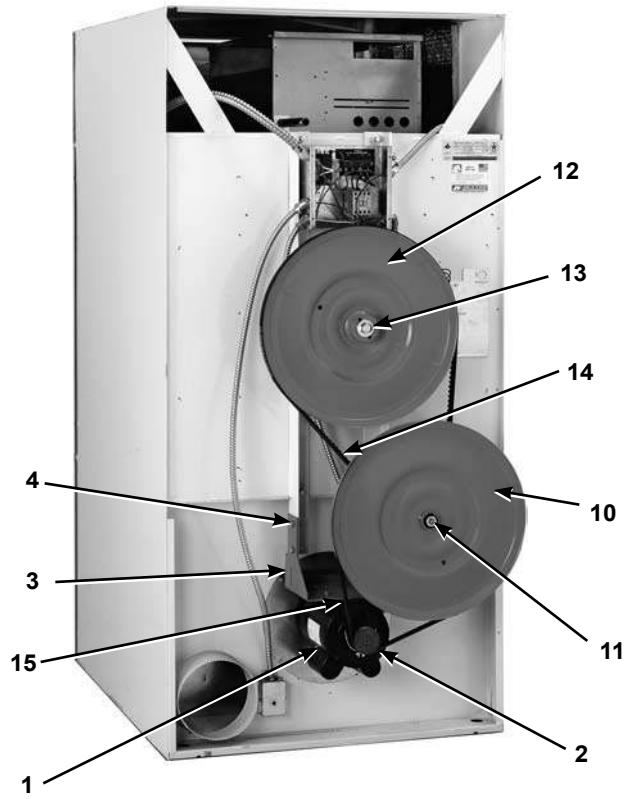
* Not Illustrated



Drive Group

Key	Part Number	Description	Quantity
1	9376-300-001	Motor, Drive.....	1
*	9545-014-004	Screw, Hx 5/16-18 x 5/8".....	4
*	8640-400-003	Nut 5/16-18.....	4
2	9453-169-010	Pulley, Motor.....	1
*	9545-028-013	Screw, Set.....	2
3	9991-054-004	Support Assembly, Motor.....	1
4	9545-014-004	Screw.....	4
*	8640-400-003	Nut.....	4
5	9991-053-001	Support Assembly, Intermed. Pulley.....	1
6	9545-029-010	Bolt, Rd Hd, 3/8-16 x 1 1/4".....	3
7	9545-029-003	Screw, 3/8-16 x 1 1/2".....	1
8	8640-415-004	Nut 3/8-16.....	3
*	8641-581-035	Washer, Flat.....	4
9	9861-024-003	Arm Assembly-Tension.....	1
*	8641-581-035	Washer, Flat.....	1
*	9487-200-006	Ring-Retaining.....	1
10	9908-042-006	Pulley Assembly, Intermediate - w/bearings.....	1
11	9036-159-007	Bearing, Ball-Idler Pulley.....	2
*	9538-173-002	Spacer, Bearing.....	1
12	9908-043-002	Pulley Driven.....	1
*	9487-234-001	Ring, Tolerance.....	1
13	8641-581-026	Washer, Flat.....	1
13	8641-582-016	Lockwasher.....	1
13	9545-017-009	Screw, Hx Cap.....	1
14	9040-077-005	Belt, Final Drive.....	1
15	9040-077-003	Belt, Motor Drive.....	1
16	9534-151-000	Spring, Belt Tension.....	1
17	9099-012-002	Chain, Spring Tension.....	1
18	9248-022-002	Hook, Tension.....	1
*	9208-066-001	Guard, Drive.....	1
*	9454-692-001	Panel, Drive Guard, RH.....	1
*	9454-693-001	Panel, Drive Guard, LH.....	1
*	9550-175-001	Shield, Motor.....	1
*	9545-008-003	Screw.....	2
*	9545-008-024	Screw (to attach to guards above).....	30

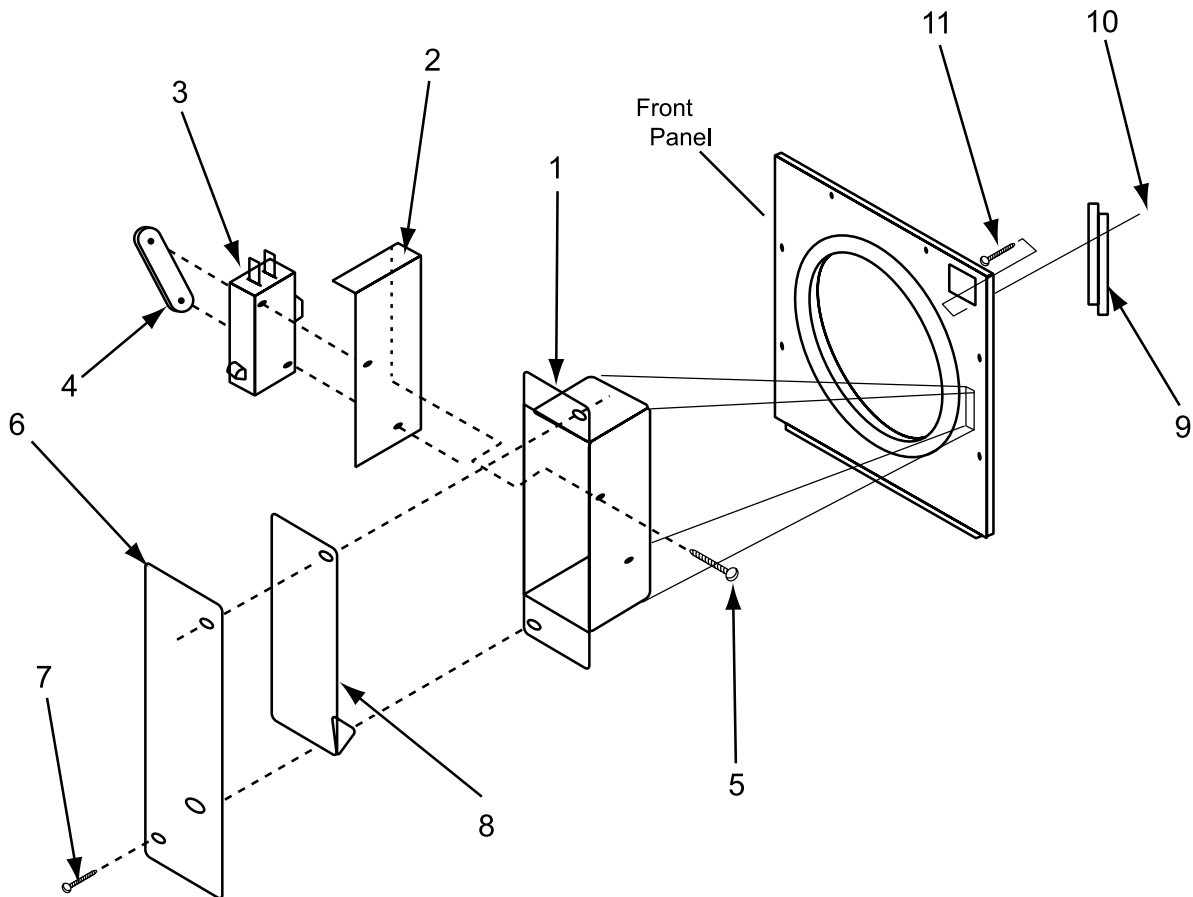
* Not Illustrated



Door Switch Group

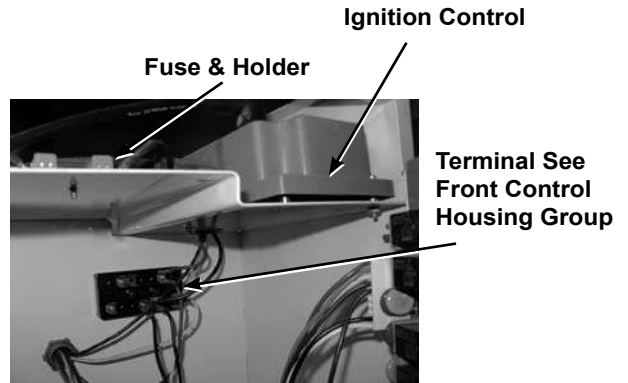
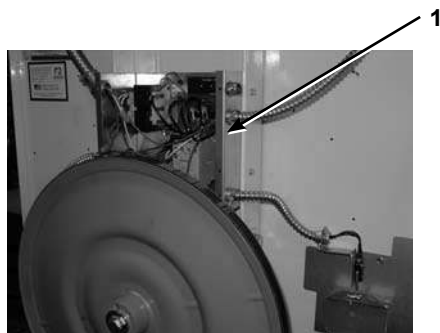
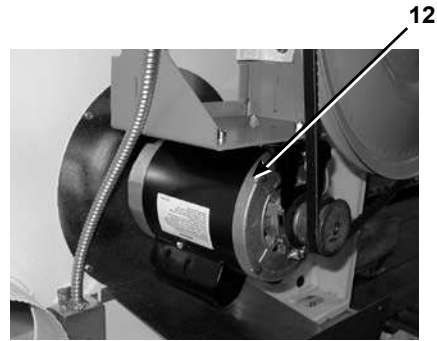
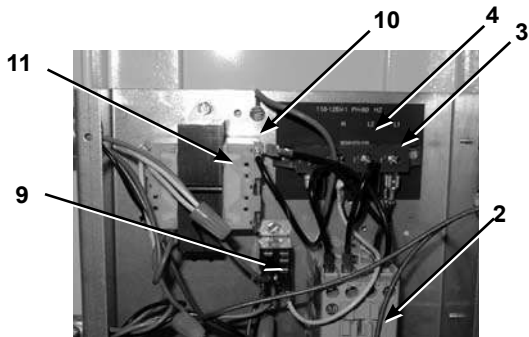
Key	Part Number	Description	Quantity
1	9041-076-001	Box, Door Switch	1
2	9550-159-001	Shield, Door Switch	1
3	9539-461-007	Switch, Door	1
4	8640-401-001	Nut, Special Twin #4-40	1
5	9545-020-001	Screw, Pn Hd Sl.#4-40x5/8	2
6	9074-255-001	Cover, Switch Box.....	1
7	9545-008-020	Screw, Box Cover 10 AB x 3/4"	2
8	9008-004-001	Actuator, Switch.....	1
9	6068-041-001	Conduit Special	1
10	9545-012-003	Screw. 10-32 x 1/2"	1
*	8641-436-000	Washer, Fiber	1
11	8640-413-004	Nut, ElasticStop 10 -32.....	1

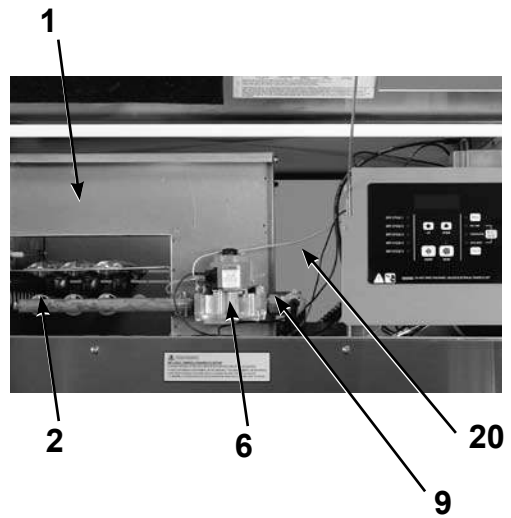
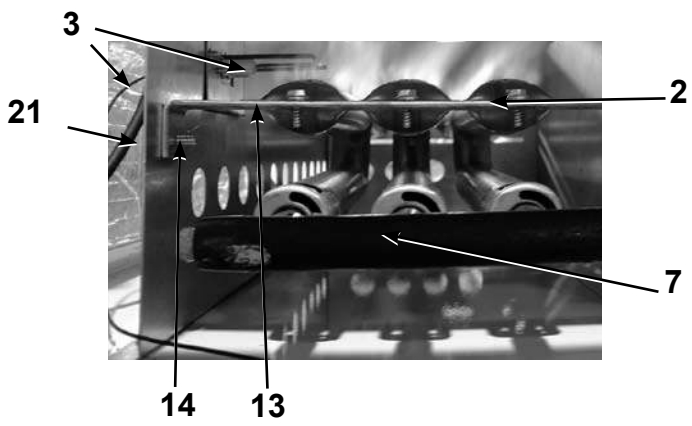
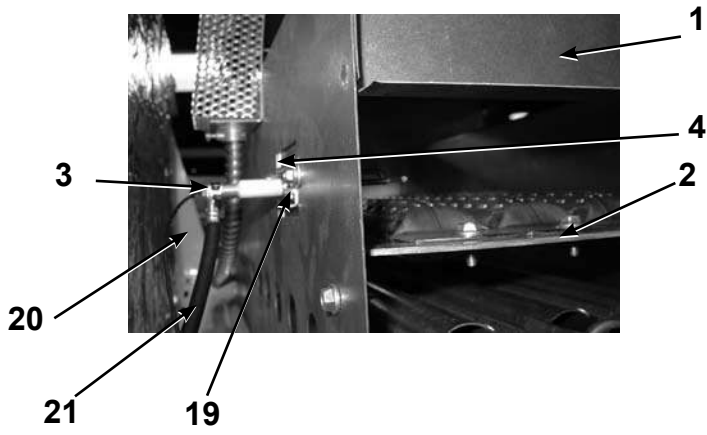
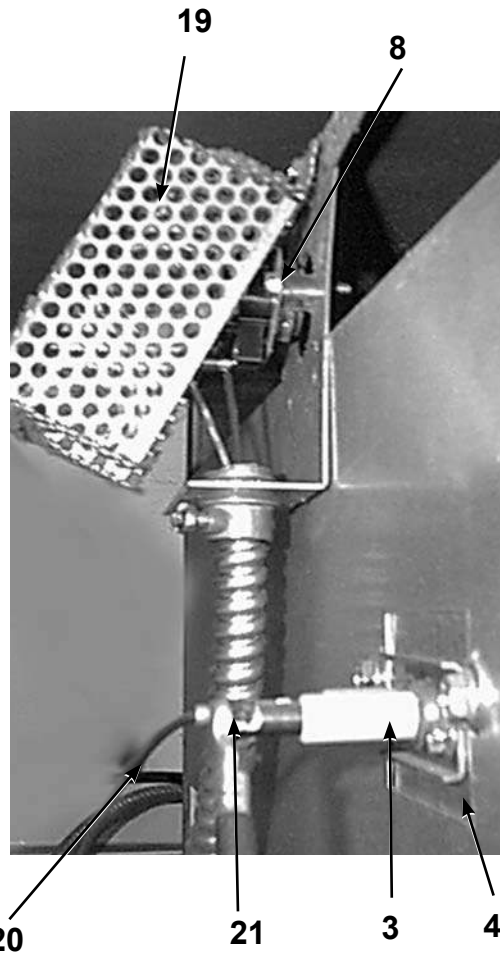
* Not Illustrated



Rear Control Group

Key	Part Number	Description	Quantity
1	9041-081-001	Box , Control.....	1
*	9074-304-001	Cover, Control Box Upper.....	1
*	9545-008-024	Screw 10AB x 3/8".....	4
2	5192-295-011	Relay (Large).....	1
*	9545-044-002	Screw, #8ABx 3/8.....	2
3	9897-035-001	Terminal Block Assembly, Power.....	1
4	9558-029-005	Strip , Terminal Marker.....	1
*	9545-045-002	Screw, #8ABx 3/8.....	2
*	9074-305-001	Cover control box lower.....	1
10	8639-621-007	Screw #10-32 x 1/2 GRN.....	1
*	8640-411-003	Nut Hexkeys #6-32.....	2
9	5192-285-001	Relay (Clear).....	1
11	8711-007-001	Transformer.....	1
*	9545-012-009	Screw--#10-32 x 1/2" Mount Transformer.....	2
*	8640-413-002	Nut Hexkeys #10-21 UNF Mount Transformer.....	2
*	9545-031-003	Screw #6Bx 3/8 Mount Small Relay.....	2
*	8220-063-018	Wire Assembly White 8".....	1
*	8220-001-230	Wire Assembly Black/Red 8 1/2".....	1
*	8220-001-231	Wire Assembly Black/Blue.....	1
*	8220-001-452	Wire Assembly White 12 1/4".....	1
*	8220-001-478	Wire Assembly Green 7".....	1
*	8220-067-001	Wire Assembly Black/Red 7 3/4".....	1
*	8220-067-002	Wire Assembly Black/Blue 7 3/4".....	1
12	9376-300-001	Motor.....	1





Burner Housing Group

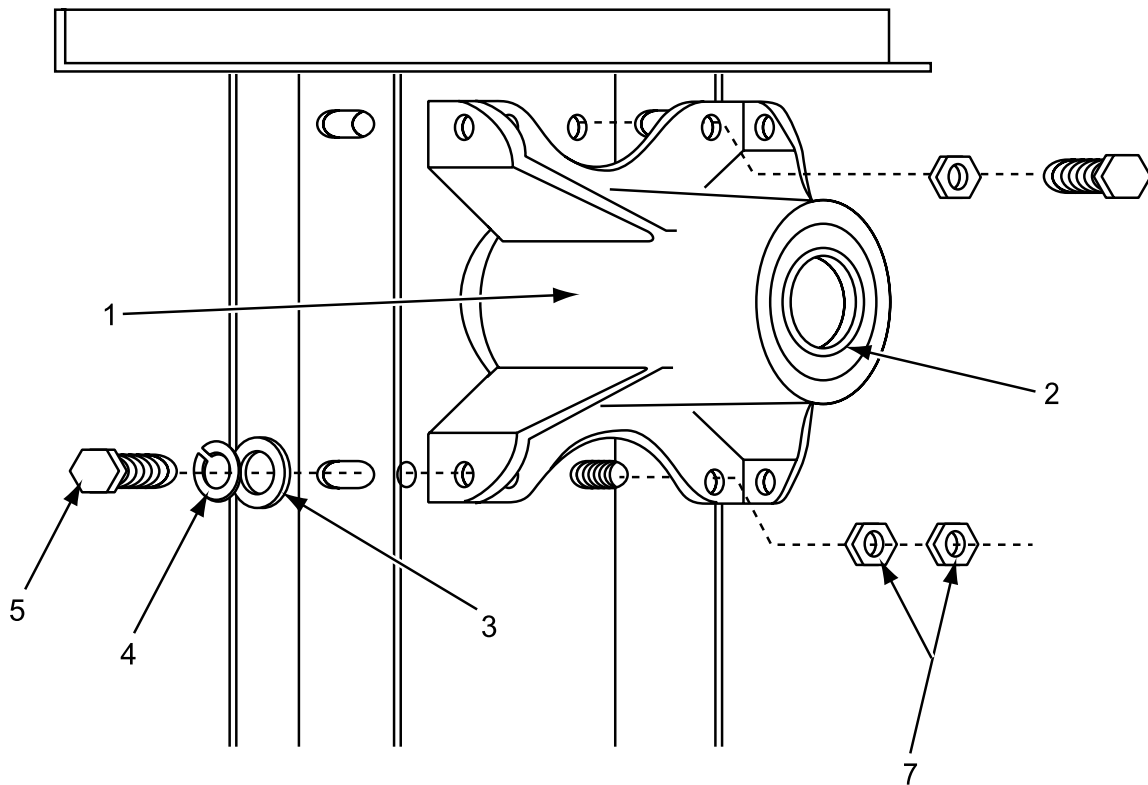
Key	Part Number	Description	Quantity
1	9803-196-001	Housing Assembly, Burner	1
*	9545-008-024	Screw	2
2	9048-018-001	Burner, Main	3
*	9545-008-008	Screw 8B x 1/14"	3
3	9875-002-002	Electrode, Ignition	1
4	9452-645-001	Plate, Electrode Mtg	1
*	9545-008-024	Screw, Electrode Mtg 8B x 10x 3/8"	2
6	9857-134-001	Control Assy, Gas	1
7	9381-010-001	Manifold, Assy 3 port	1
*	9425-069-021	Orifice, Burner-Natural	3
*	9425-069-022	Orifice, Burner-LP	3
8	9576-203-002	Thermostat, Hi-Limit	1
*	9538-142-001	Spacer, Hi-Limit	2
*	9545-045-007	Screw 8B x 3/4"	2
19	9074-234-001	Cover, Hi-Limit Stat	1
*	9545-008-024	Screw 10 B x 3/8"	1
*	9857-116-003	Control, Ignition (Gray Box)	1
*	9545-044-002	Screw 6-32 x 1"	2
*	8640-411-003	Nut, Hex Keps #6-32	2
*	9897-026-001	Terminal Block Power (Inside Control Panel)	1
*	9545-031-004	Screw 6 AB x 5/8"	2
*	9039-915-001	BRACKET, Pipe gas line	1
*	9545-008-003	Screw 6AB x 5/8"	2
21	9631-403-003	Wire Ass'y, High Voltage	1
20	9627-711-001	Harness, Low Voltage Ignition	1
*	9054-045-001	Fuseholder	1
*	8636-018-001	Fuse 1.5 amps	1
*	8711-007-001	Transformer, Control (In rear control box)	1
*	9545-012-009	Screw, #10x1/2"	2
*	9732-102-010	Kit, LP Conversion	1
13	9548-280-001	Support, Front Burner	1
14	9545-008-008	Screw 10T-32 x 1/2"	3
*	9454-738-001	Left side burner housing	1
*	9454-572-001	Right side burner housing	1
9	9379-164-001	Valve, Gas Shut-Off w/ brass union	1
*	9458-020-003	Pipe, Gas Line	1
*	9454-737-001	Front Side Burner Housing	1

* Not Illustrated

Bearing Housing Group

Key	Part Number	Description	Quantity
*	9803-189-001	Housing, Bearing Ass'y w one(rear) bearing	1
1	9241-183-003	Housing, Bearing	1
2	9036-159-001	Bearing, Ball-Rear	1
*	9036-159-002	Bearing, Ball-Front	1
3	8641-581-026	Washer, Flat 1/2"	4
4	8641-582-004	Lockwasher spring 1/2"	4
5	9545-017-004	Bolt, 1/2-13x1	4
6	9545-059-003	Screw, 7/16-14x1 1/2.....	2
*	8641-582-013	Lockwasher, 7/16	2
7	8640-416-001	Nut, 7/16-14.....	4

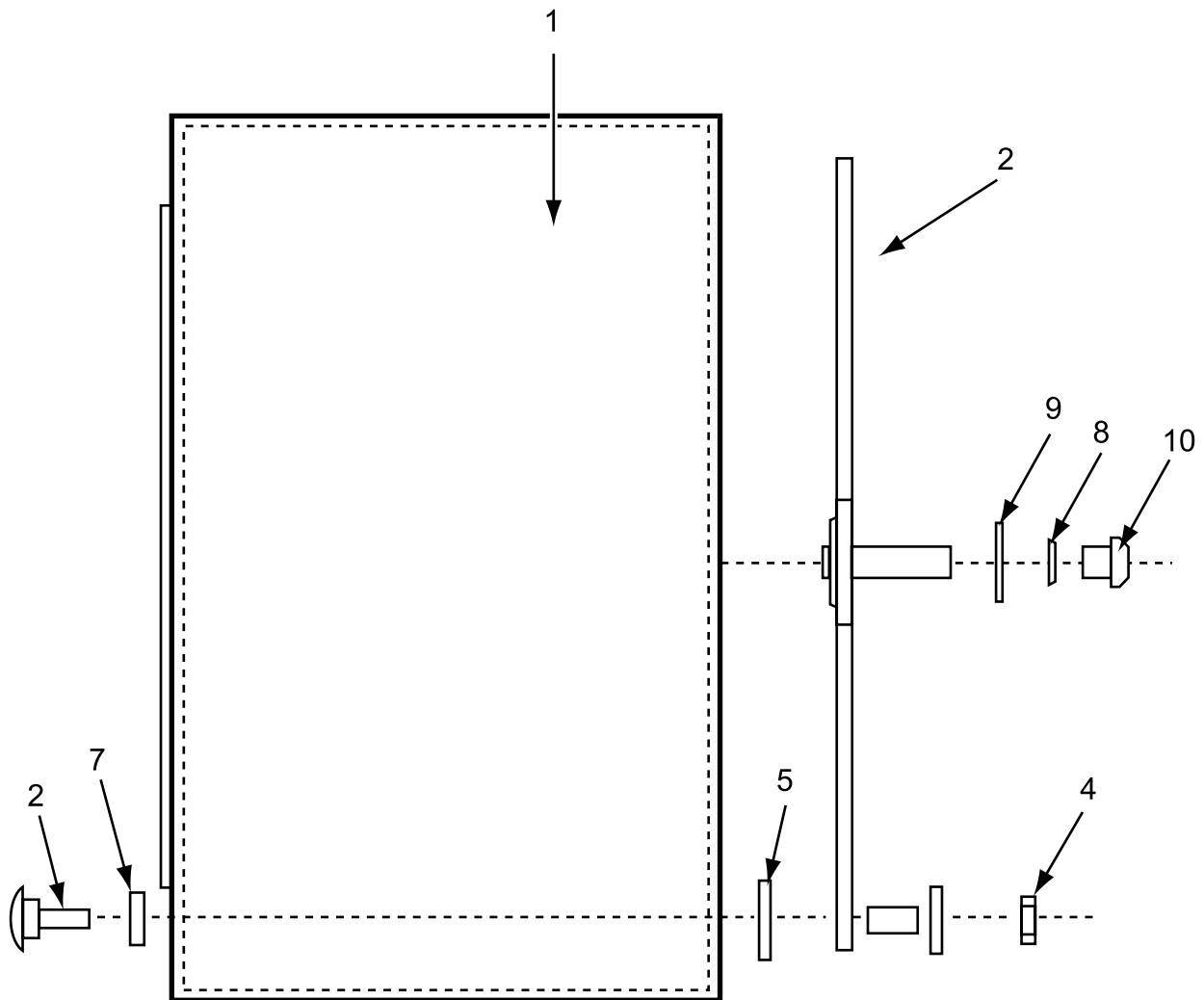
* Not Illustrated

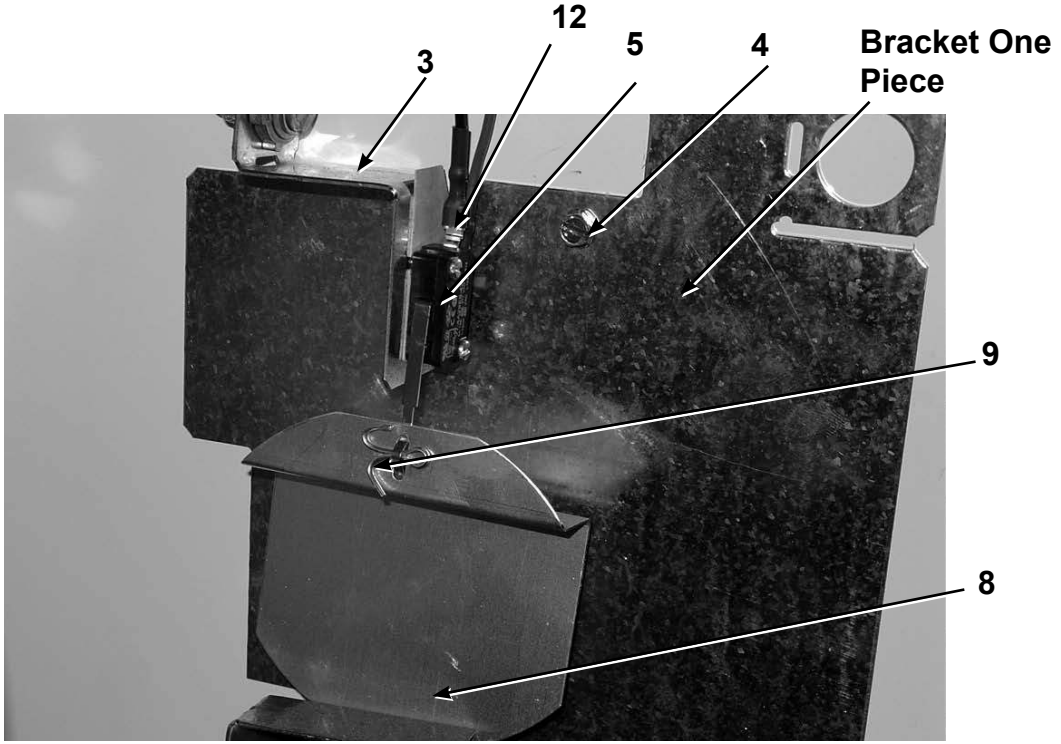
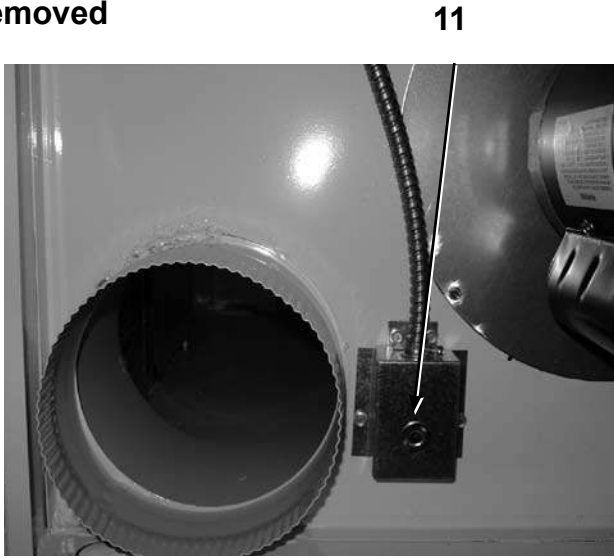
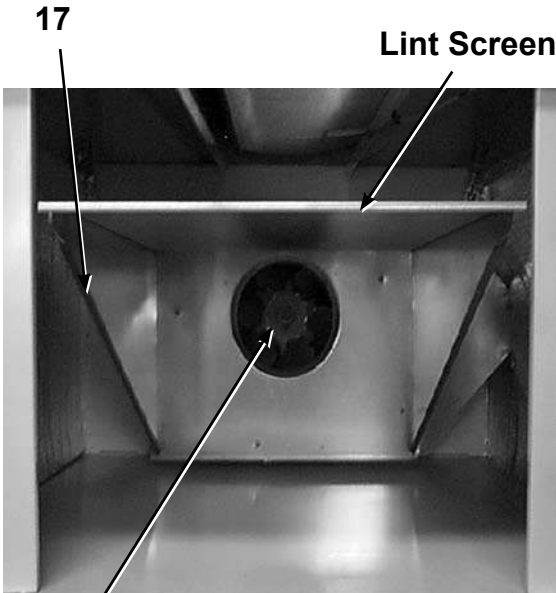


Tumbler Basket Group

Key	Part Number	Description	Quantity
1	9848-132-001	Tumbler Ass'y	1
*	9848-132-002	Tumbler Ass'y, SS.....	1
2	9873-005-001	Spider Ass'y with bearing on	1
3	9497-226-001	Rod, Tumbler	4
4	8640-417-005	Nut 1/2"	4
5	9552-013-000	Shim.....	4
7	8641-590-002	Washer, Tumbler Rod Special	4
*	9487-234-001	Ring, Tolerance.....	1
8	8641-582-016	Lock Washer ext tooth 1/2", Tumbler Shaft	1
9	8641-581-026	Flat Washer 1/2", Tumbler Shaft.....	1
10	9545-017-009	Screw, Tumbler Shaft 1/2-13 x 11/4"	1

* Not Illustrated

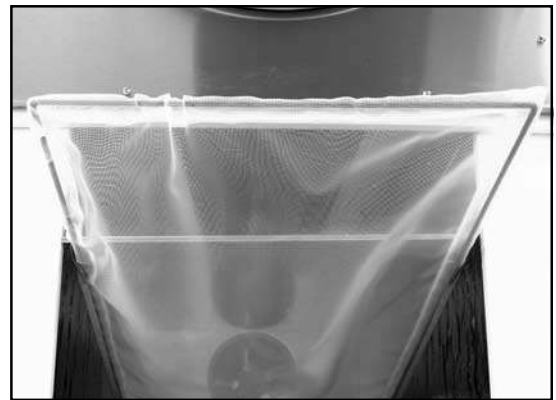




Blower Impeller and Air Flow Switch Group Over Temperature Switch

Key	Part Number	Description	Quantity
3	9029-135-002	Bracket -Switch One Piece	1
4	9545-008-024	Screw-10B x 1/4	2
5	9539-461-009	Switch-Micro	1
12	9545-020-001	Screw 4-40 x 5/8.....	2
*	8640-401-001	Nut Twin.....	1
8	9008-007-001	Actuator-Switch.....	1
9	9451-169-002	Pin Cotter.....	1
13	9039-575-000	Bracket Conduit	1
11	9825-057-002	Over-tempcoverass'y	1
*	9576-207-006	Thermostatover-tempMnl.....	1
*	9545-008-024	Screw 10B x 3/8.....	2
*	9550-169-003	Shield for macro switch.....	1
17	9834-010-001	Hood Ass'y, Lint	1
*	8640-412-004	Nut, Whizlock.....	6
*	9822-031-002	Lint Screen 34" length (newest style)	1
10	9278-038-004	Impeller, w/set screws.....	1

* Not Illustrated



17

Lint Screen

Wires & Harness Group

Key	Part Number	Description	Quantity
*	8220-001-486	BRN 26" Air Flow Switch.....	1
*	8220-001-499	BLK 26" Air Flow Switch.....	1
*	8220-101-002	BLK 64" Safety Thermostat.....	1
*	8220-103-003	Wire Assembly GRY 64" Safety Thermostat.....	1
*	8220-101-007	Wire Assembly VIO 54" Hi Limit Thermostat.....	1
*	8220-101-004	Wire Assembly BRN 54" Hi Limit Thermostat.....	1
*	2114-008-000	Bushing Anti Short.....	1
*	8220-001-480	Wire Assembly BLK 45" Door Switch.....	1
*	8220-001-479	Wire Assembly BLU 45" Door Switch.....	1
*	8220-001-461	Wire Assembly WHT 58".....	1
*	8220-062-007	Wire Assembly BLK 74".....	1
*	8220-064-012	Wire Assembly RED 61".....	1
*	8220-063-017	Wire Assembly GRY 64".....	1
*	8220-065-021	Wire Assembly VIO 61".....	1
*	8640-276-003	Wire Nut #73 B ORG.....	1
*	8220-060-001	Wire Assembly GRN 12".....	1
*	8220-063-018	Wire Assembly WHT 8" Control Box.....	1
*	8220-001-230	Wire Assembly BLK/RED 8.5" Control Box.....	1
*	8220-001-231	Wire Assembly BLK/BLU Control Box.....	1
*	8220-001-452	Wire Assembly WHT 12" - 4" Control Box.....	1
*	8220-001-478	Wire Assembly GRN 7" Control Box.....	1
*	8220-067-001	Wire Assembly BLK/RED 7 3/4" Control Box.....	1
*	8220-067-002	Wire Assembly BLK/BLU 7 3/4" Control Box.....	1
*	8220-001-466	Wire Assembly Yellow 4 7/8".....	1
*	9627-711-001	Low Voltage Harness.....	1
2	9637-403-003	High Voltage Harness.....	1
*	8220-001-290	Wire Assembly BLK.....	1
*	9627-679-002	Wire Harness Heat Sensor.....	1
*	8640-276-005	Wire Nut #71 Black Temp Sensor.....	2
*	8220-106-001	Wire Assy Red 59" - Motor.....	1
*	8220-106-002	Wire Assy White 59" - Motor.....	1
*	8220-103-004	Wire Assy Blue 59" - Motor.....	1

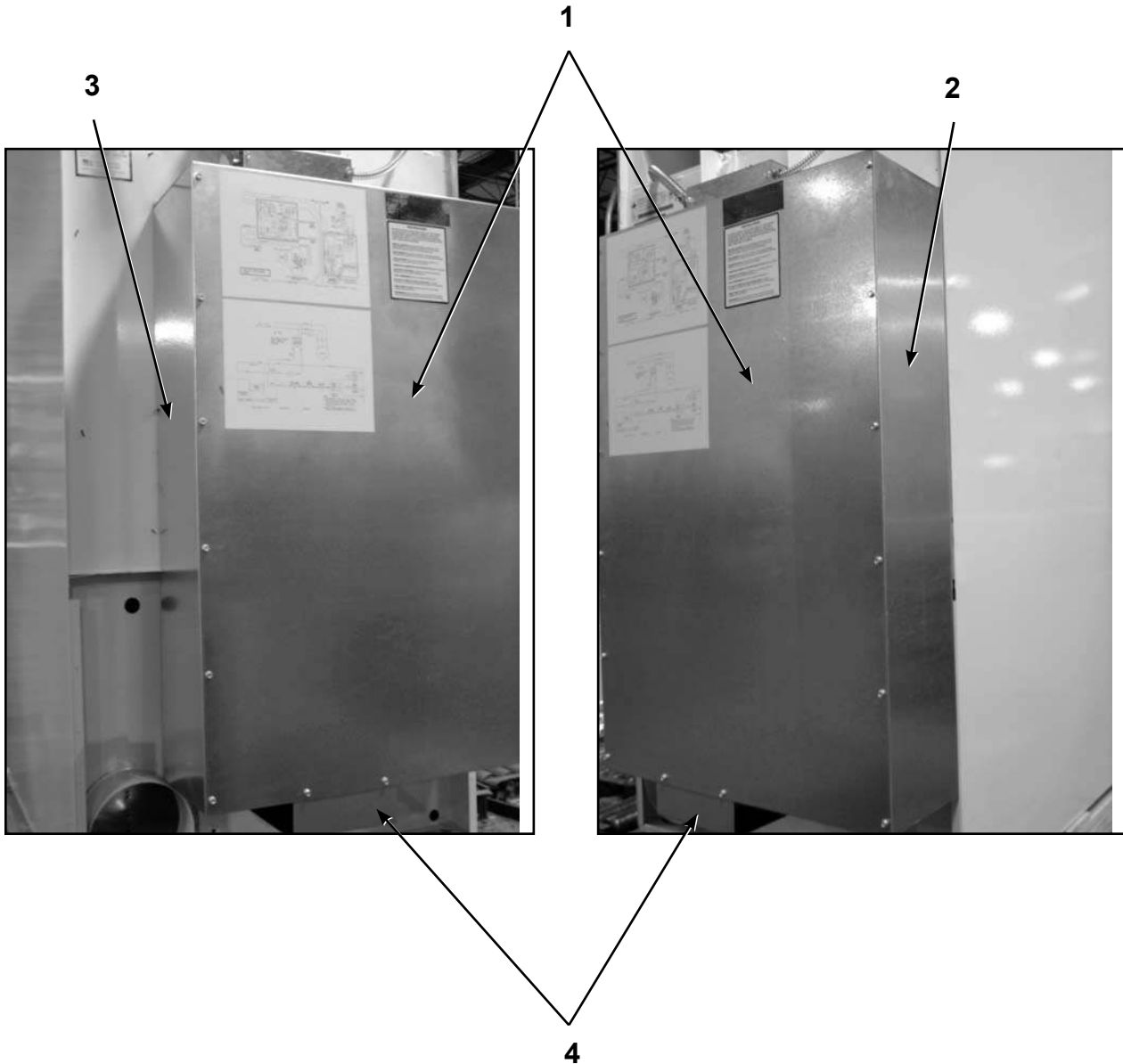
Label Group

Key	Part Number	Description	Quantity
*	8507-256-001	Instructions Uncrating.....	1
*	8514-074-001	Owners Booklet.....	1
*	8507-350-001	Instructions Dry Install / Start-Up.....	1
*	8507-330-001	Instructions TVSS.....	1
*	9345-892-001	Wiring Schematic.....	1
*	9345-891-001	Wiring Diagram.....	1
*	8511-001-002	Label Quality.....	1
*	8502-658-001	Label Fire Hazard.....	1
*	8527-115-001	Label Decal Lighting and Clearance.....	1
*	8502-645-001	Label Instructions.....	1
*	8502-600-001	Label Warning and Notice.....	1

Rear Guard Group

Key	Part Number	Description	
1	9208-066-001	Drive Guard.....	1
2	9454-692-001	Right Side Panel Drive Guard.....	1
3	9454-693-001	Left Side Panel Drive Guard	1
4	9550-175-001	Motor Shield.....	1
*	9545-008-003	Screw 10-16 x 1/2 TEK	2
*	9545-008-001	Screw 10 B x 1/4.....	11

* Not Illustrated



Electric Heated Dryers Electrical Parts All Types of KW

DCWD 55H__ 18 FD 240/60/3 24 KW

Key	Part Number	Description	Quantity
*	5192-296-001	Relay	1
*	5198-213-001	Circuit Breaker 3 Pack	2
*	8220-057-016	Wire Assembly Blk	3
*	9345-969-001	Schematic	1
*	9345-970-001	Diagram.....	1
*	9870-088-004	Heater Elements 12 KW 240 V	2
*	5192-285-004	Relay	1
*	9377-003-001	Variator Coil Supply	1
*	8502-711-001	Warning Label 208V.....	1
*	8220-057-004	Wire Brown 30"	1
*	8220-057-007	Wire White/Black 45"	1
*	8220-057-008	Wire Black 45"	1
*	8220-057-011	Wire V10 32"	1
*	8220-057-015	Wire Black 8"	6
*	8220-057-019	Wire White 8"	1
*	8220-061-008	Wire Black 36"	4
*	8220-061-010	Wire Black 48"	2
*	8220-078-008	Wire Black 9"	2
*	8220-078-011	Wire White 45"	1
*	8220-078-012	Wire Red 45"	1
*	8502-614-004	Label High Voltage.....	1
*	8502-708-001	Label Exhaust Warning.....	1
*	8514-091-001	Owners Book	1
*	9029-127-001	Guard Bracket Mounting	1
*	9208-053-001	Guard Front Cabinet Cover	1
*	9208-054-001	Guard Rear Cabinet Cover	1
*	9074-289-001	Cover Plate Control Box.....	1
*	9210-117-001	Gussett Control Box.....	1
*	9548-282-001	Support Wire	2
*	9074-288-001	Cover Plater Heater.....	1
*	9636-151-001	Wrapper Heat Housing RH	1
*	9636-152-001	Wrapper Heat Housing LH	1
*	9550-181-001	Shield Side Heathousing.....	2
*	9577-056-001	Top Heater Housing Half.....	2
*	9053-067-001	Bushing Insulated 3/4"	6
*	9577-057-001	Top Box Control	1
*	9636-153-001	Wrapper Box Control.....	1
*	9058-025-001	Bottom Box Control.....	1
*	9053-067-004	Bottom Bushing Insulated	2
*	9295-004-001	Formed Jumper.....	2
*	9295-005-001	Straight Jumper.....	4
*	9488-010-003	Din Rail 4 3/4"	1
*	9897-037-001	Power Block 3 Pole	1
*	9897-038-001	Power Block 1 Pole	1
*	9209-087-001	Grommet	1
*	8640-399-004	Nut Spring	1
*	8640-399-009	Nut Spring U Type	4
*	8502-639-001	Label Warning	1
*	8502-702-001	Label Warning Fire Hazard (French).....	1
*	8652-134-002	Terminal Lug Solderless	1

Electric Heated Parts Model Specific

DCWD 55H__ 16 FC 208/60/3 24 KW

Key	Part Number	Description	Quantity
*	5198-213-002	Circuit Breaker 3 Pole	2
*	5192-296-001	Relay, Heating Element.....	1
*	8220-057-016	Wire Assembly Blk 8"	3
*	9870-088-005	Heater Elements 12 KW 208 V	2
*	9345-967-001	Schematic	1
*	9348-968-001	Diagram.....	1

DCWD 55H__ 16 FE 208/60/3 30 KW

Key	Part Number	Description	Quantity
*	9345-971-001	Schematic	1
*	9345-972-001	Diagram.....	1
*	5198-213-004	Circuit Breaker 3 Pole	2
*	5192-294-001	Relay, Heating Element.....	1
*	8220-057-014	Wire Assembly Black 8"	3
*	9870-088-001	Heater Elements 15 KW 208 V	2

DCWD 55H__ 18 FG 240/60/3 30 KW

Key	Part Number	Description	Quantity
*	5192-294-001	Relay, Heating Element.....	1
*	5198-213-003	Circuit Breaker 3 pole.....	2
*	8220-057-014	Wire Assembly Black 8"	3
*	9345-973-001	Schematic	1
*	9345-974-001	Diagram.....	1
*	9870-088-002	Heater Element 15KW 240 V	2

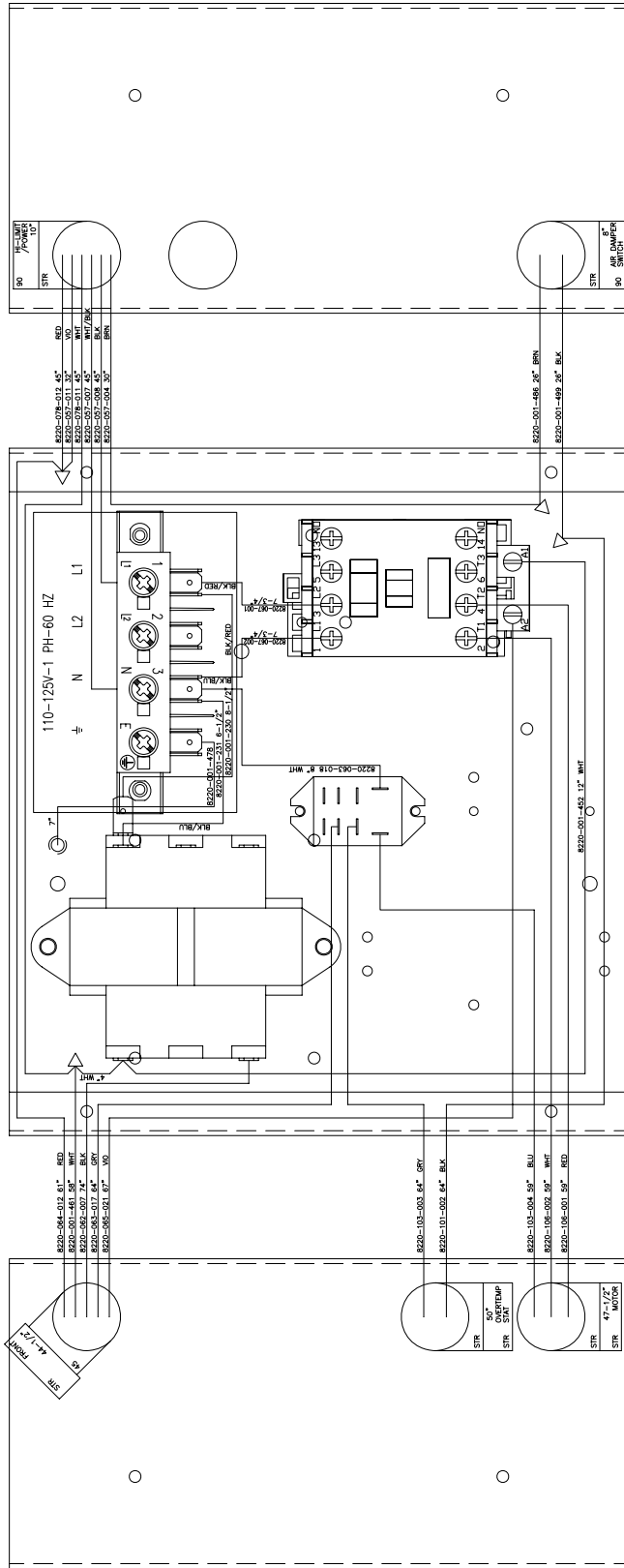
Steam Heated Parts Model Specific

DCWD 55H__ 10 FS

Key	Part Number	Description	Quantity
*	9799-021-001	Steam PCB Assembly Micro	1
*	9805-031-001	Lint Screen Assembly Intake.....	1
*	9506-032-001	Wire Diagram	1
*	9506-031-001	Wire Schematic.....	1
*	9488-012-001	Rail Lint Screen Intake	1
*	9379-193-001	Steam Valve Solenoid	1
*	9242-465-001	Braided Steam Hose Stainless	2
*	9089-048-001	Coil Steam Heating	1
*	8514-080-001	Owners Manual	1
*	8502-717-001	Label Lint Screen	1
*	8220-078-017	Wire Assembly White 7"	1
*	8220-078-016	Wire Assembly Red 7"	1
*	8220-067-002	Wire Assembly Black/Blue 7 3/4"	2
*	8220-064-037	Wire Assembly Green 40"	1
*	8220-063-010	Wire Assembly Black/Red 7"	1
*	5192-285-004	Relay	1

Section 7:

Electric Heated & Steam Heated Wiring Diagrams & Informatives

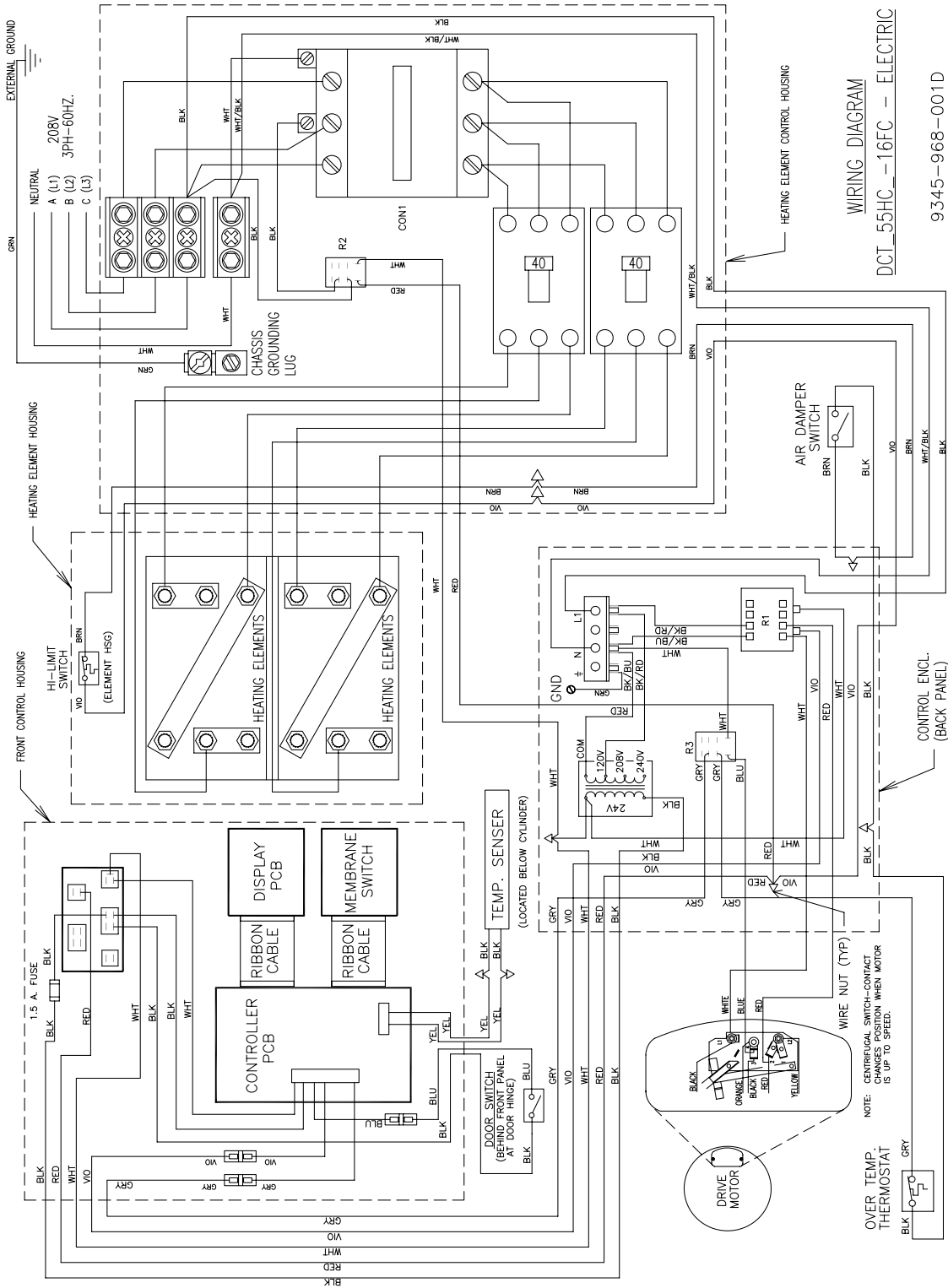


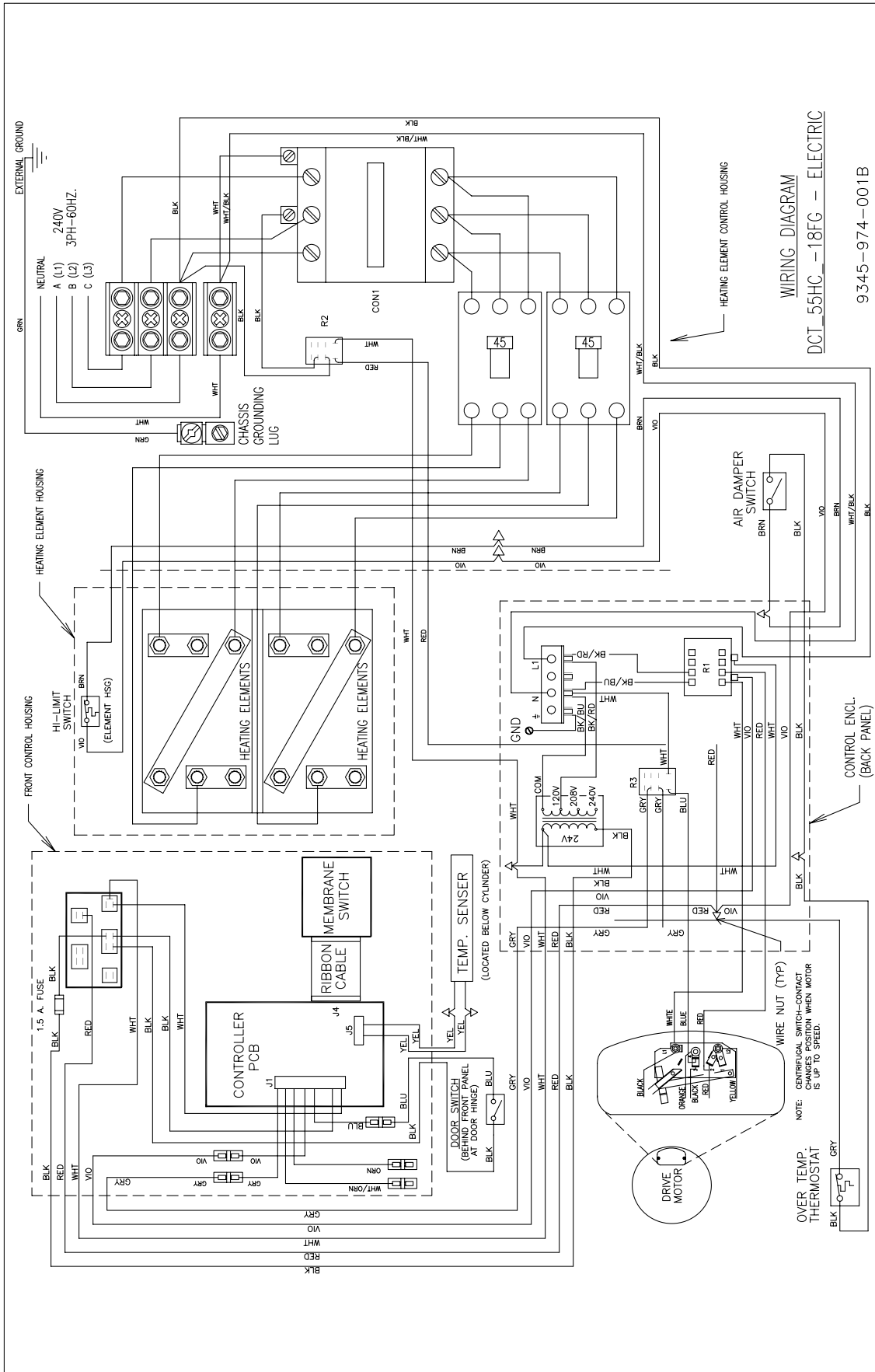
DCT_55HC_1(6,8)F(C,D) — ELECTRIC
 DCT_55HC_1(6,8)F(E,G) — ELECTRIC

SAMPLE BOX

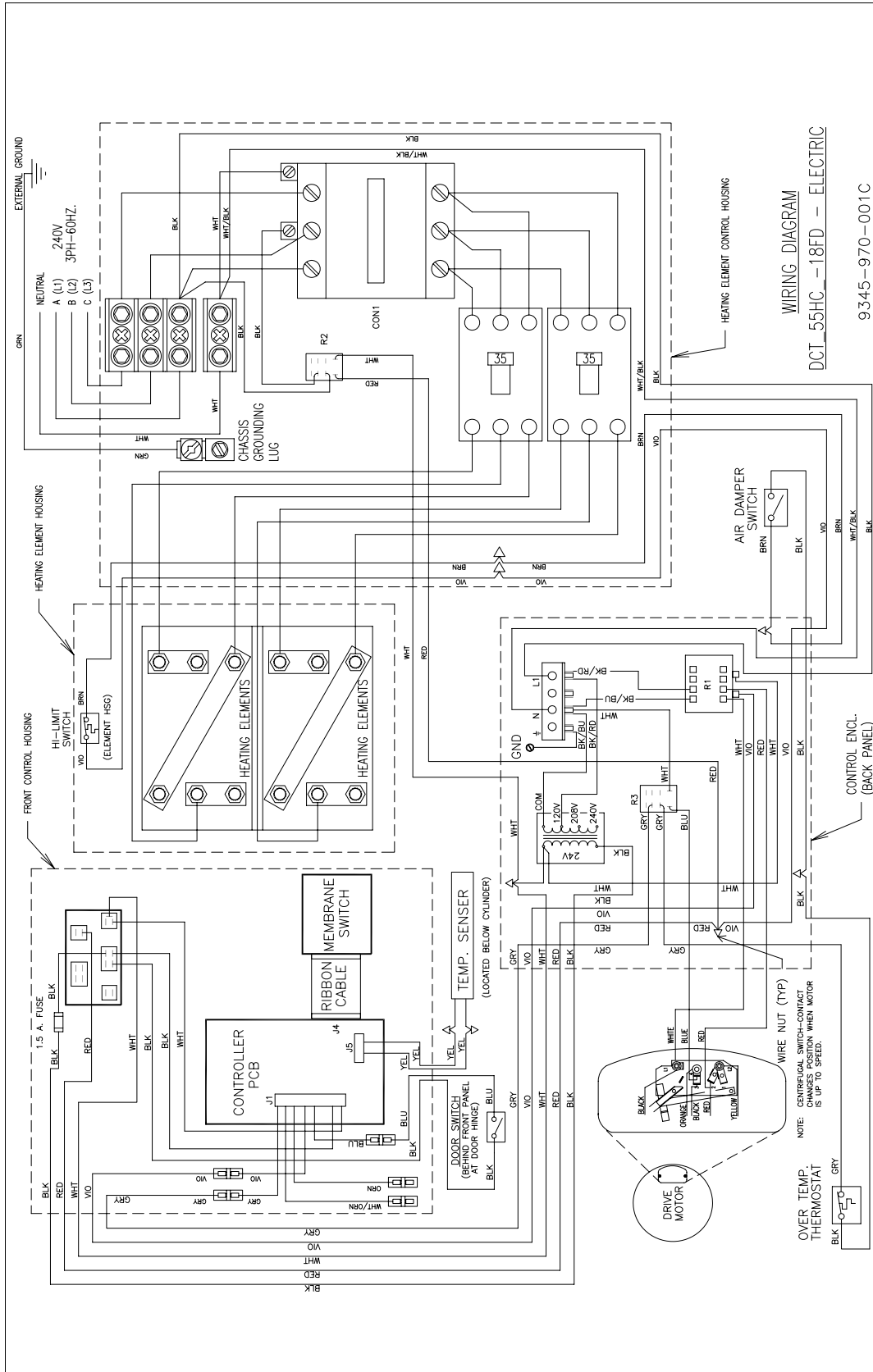
INFORMATIVE 6102-018-057

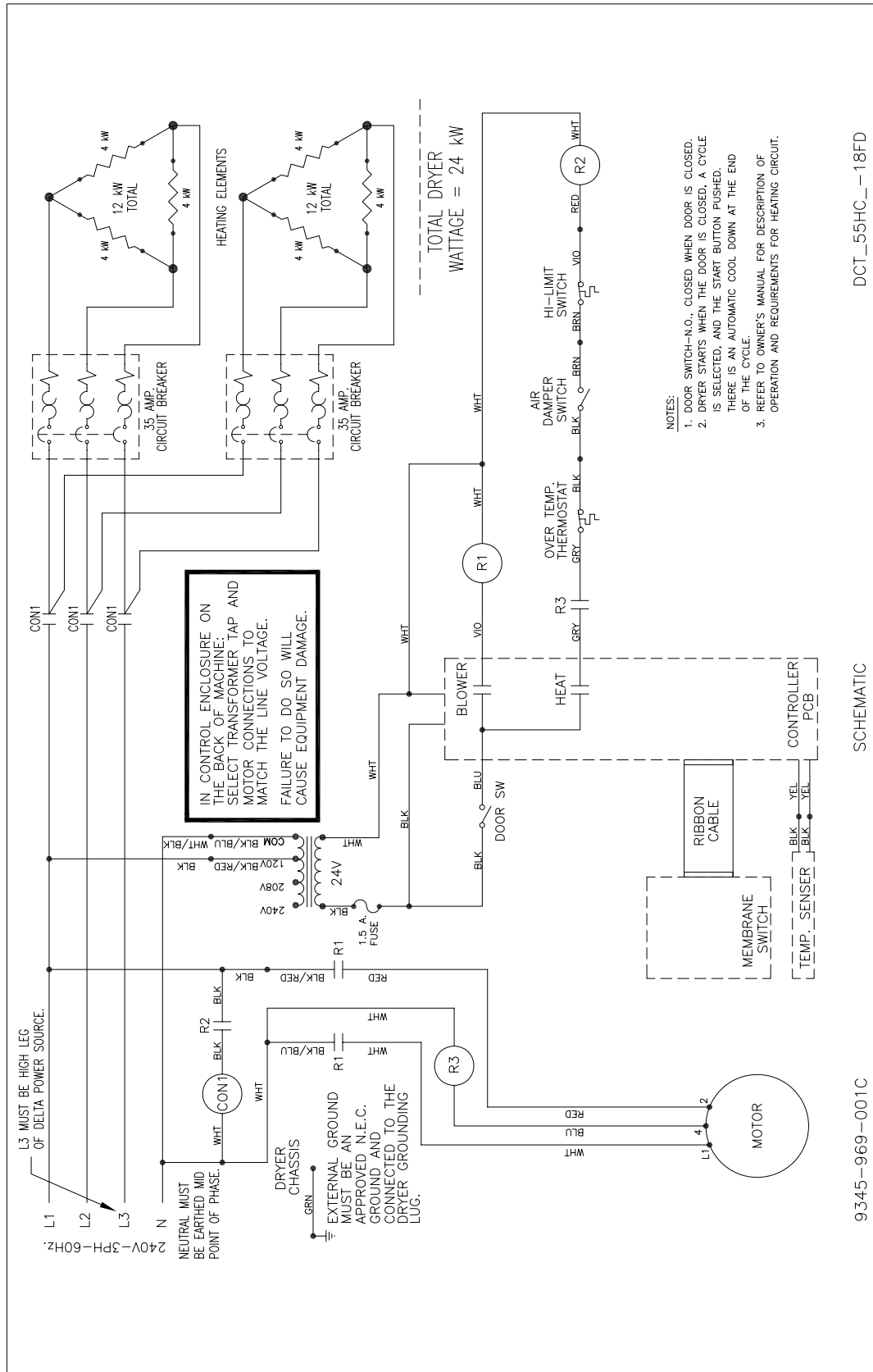
9041-081-001H





WIRING DIAGRAM
 DCT_55HC_-18FG - ELECTRIC
 9345-974-001B

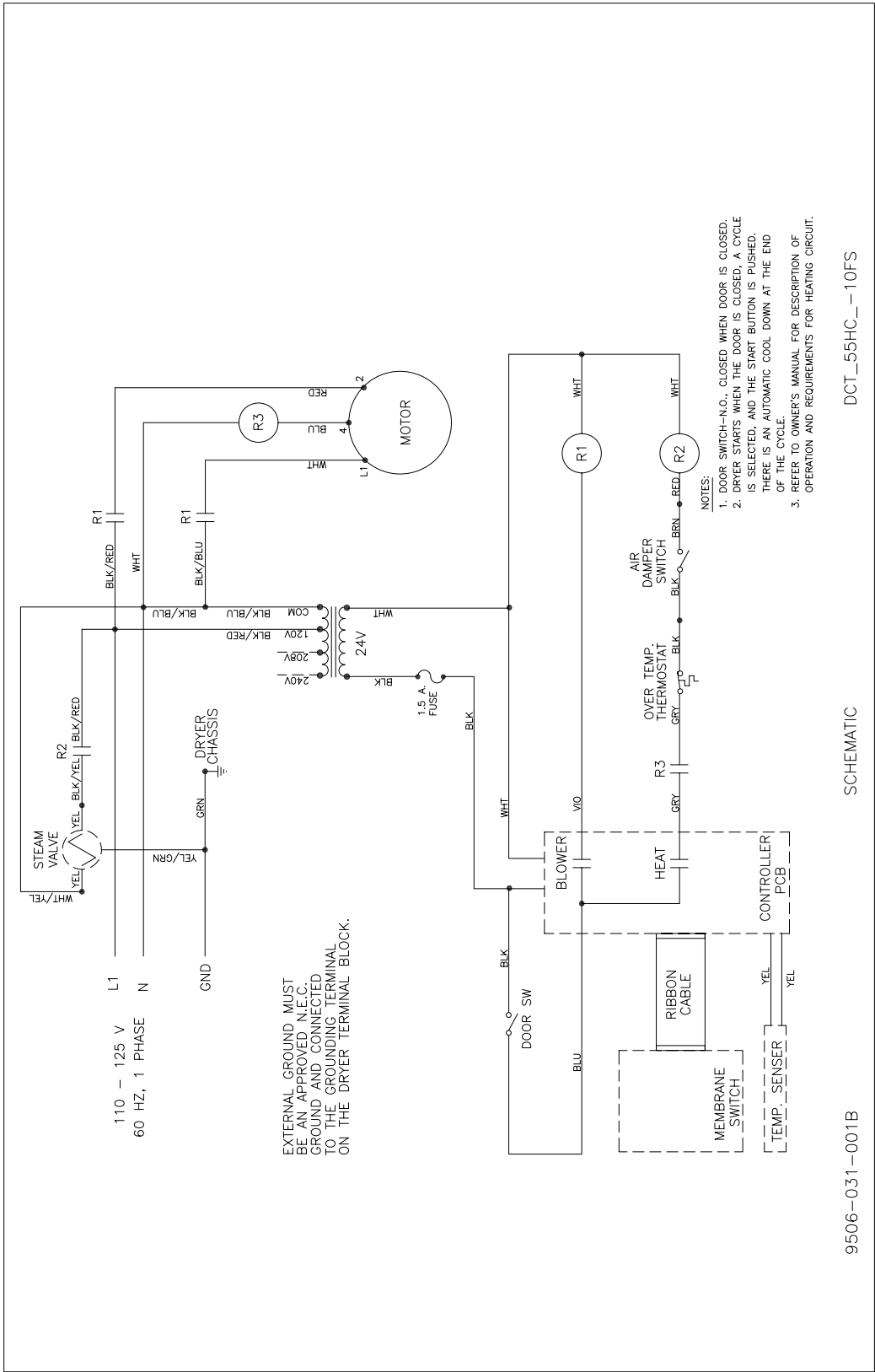




DCT_55HC_18FD

SCHEMATIC

9345-969-001C



EXTERNAL GROUND MUST BE AN APPROVED N.E.C. GROUND AND CONNECTED TO THE GROUNDING TERMINAL ON THE DRYER TERMINAL BLOCK.

- NOTES:
1. DOOR SWITCH-N.O. CLOSED WHEN DOOR IS CLOSED.
 2. DRYER STARTS WHEN THE DOOR IS CLOSED, A CYCLE IS SELECTED, AND THE START BUTTON IS PUSHED. THERE IS AN AUTOMATIC COOL DOWN AT THE END OF THE CYCLE.
 3. REFER TO OWNER'S MANUAL FOR DESCRIPTION OF OPERATION AND REQUIREMENTS FOR HEATING CIRCUIT.

DCT_55HC_-10FS

SCHEMATIC

9506-031-001B

Section 8:

50hZ

Parts Data

Notes

Model DCWD55HC_59 50Hz

w/ Microprocessor Control Gas Heat Source

Capacity

Dry Weight Capacity	55 lbs	24.8 kg
Cylinder Diameter	32.5"	82.55 cm
Cylinder Depth	38"	96.52 cm
Cylinder Volume	18.2 cu ft	516.5 dm ³

Dimensions

Cabinet Height (with feet)- Minimum	72.25"	183.52 cm
Cabinet Height (with feet)- Maximum	73.25"	186.06 cm
Cabinet Width	34.4375"	87.47 cm
Overall Depth	51.125"	129.86 cm
Floor to Door Bottom	29.5"	74.93 cm
Door Opening	22.6875"	57.63 cm

Electrical

Electrical Phase	Single
Electrical Voltage (50 Hz)	220 - 240 V
Electrical Running Amps (50 Hz)	5
Circuit Protection (50 Hz)	10 AMP
Electrical Wire Size	12 Gauge
Electrical Service (Single Phase)	2 wire + ground
Motor Size	.56 kW
Tumble Direction	Counter Clockwise
Tumble Speed	47 RPM

Gas Heat

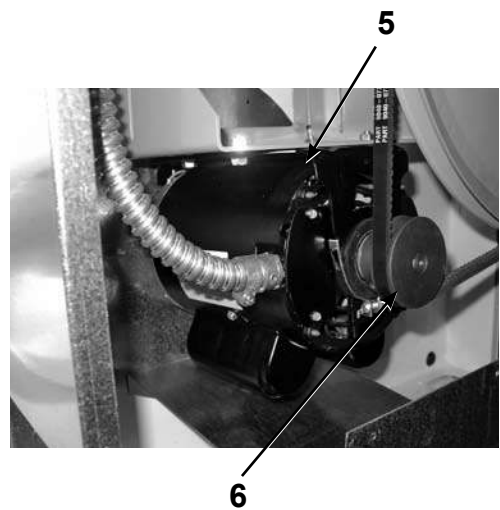
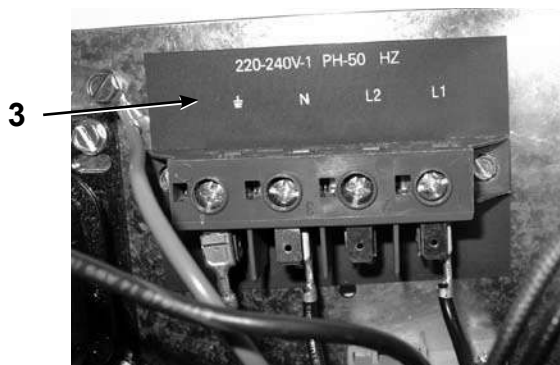
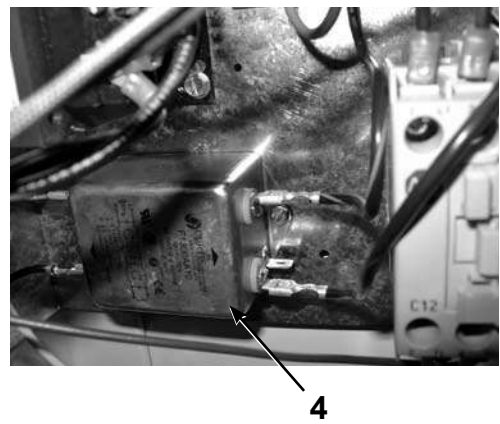
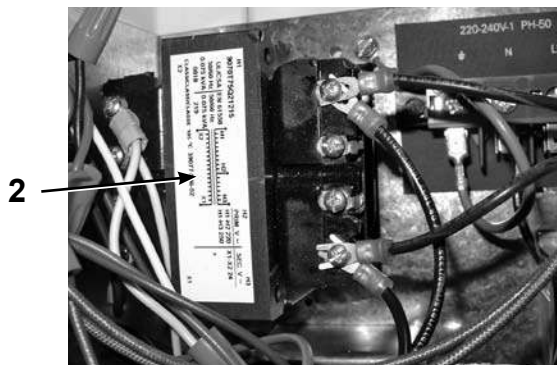
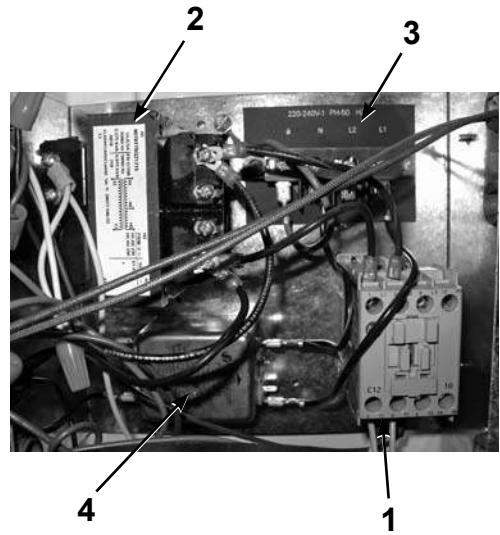
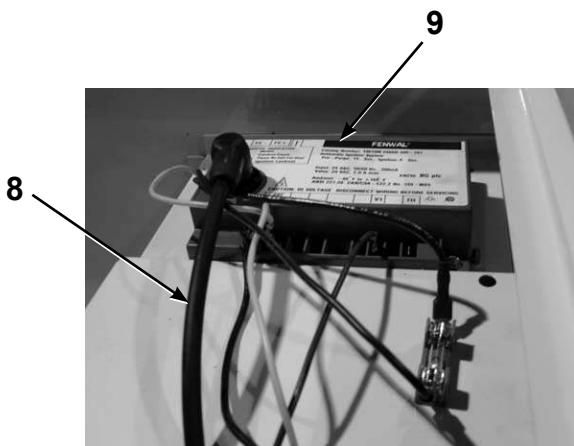
Gas Input/Hour	160,000 BTU	,320 kcal
Gas Supply Connection (NPT)	1/2"	12.7 mm
Natural Gas Supply (Water Column)	5 -10"	12.7 - 25.4 cm
L.P. Supply (Water Column)	11.0 -13.5"	27.9 - 34.29 cm

Installation

Air Flow	910 CFM	25.77 M ³ /min
Exhaust Size (Vent Diameter)	8"	20.32 cm
Make-Up Air (Minimum)	1.25 ft ²	.12 m ²
Net Weight	581 lbs	262 kg
Clearance Behind Machines (Minimum)	18"	45.72 cm

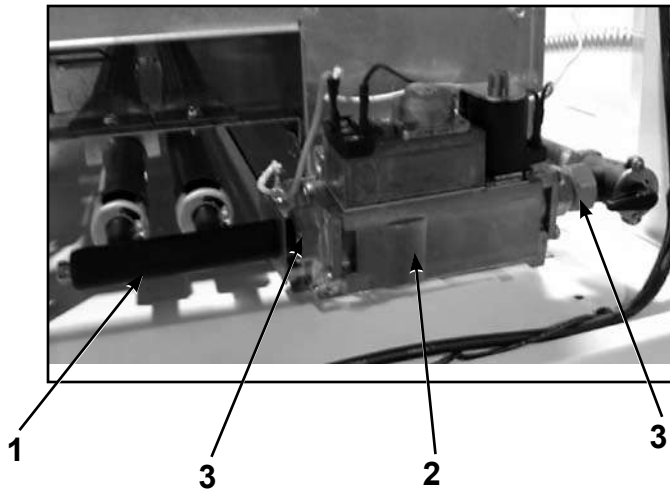
DCWD 55HC--59 Electrical Components 50Hz

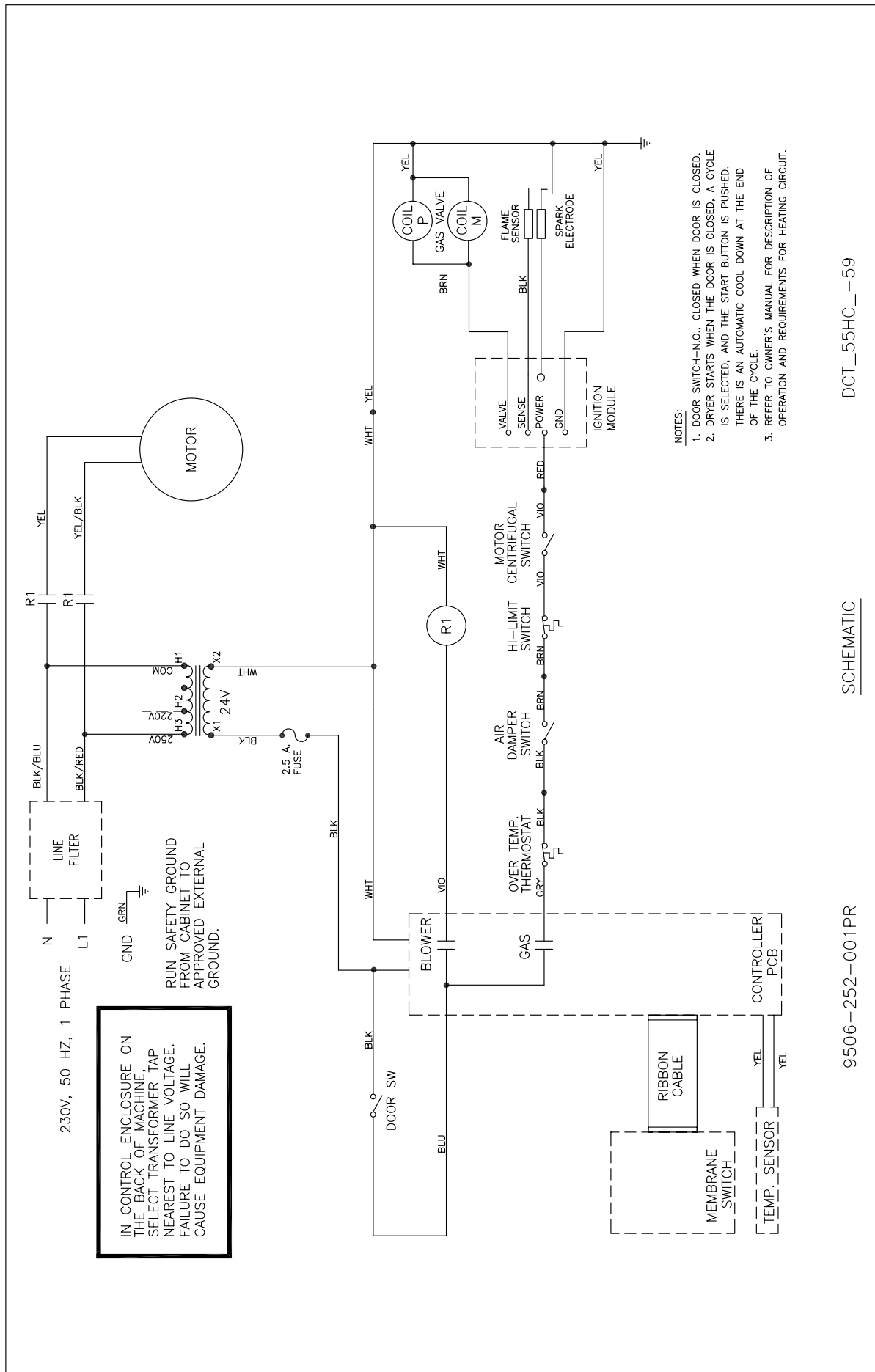
Key	Part Number	Description	Quantity	
1	5192-295-010	Relay.....	1	
	8220-001-282	Wire Assembly-RED, 20"	1	
	8220-001-462	Wire Assembly-VIO, 58"	2	
	8220-001-524	Wire Assembly-BLK, 46"	1	
	8220-001-530	Wire Assembly-BLK, 67"	1	
	8220-001-531	Wire Assembly Jumper-WHT, 12"-4".....	1	
	8220-065-006	Wire Assembly-BLK/RED, 11"	1	
	8220-065-007	Wire Assembly-BLK/BLU, 11"	1	
	8220-068-002	Wire Assembly-BLK/RED, 7"	1	
	8220-068-003	Wire Assembly-BLK/BLU, 5"	1	
	8220-088-002	Wire Assembly-BLK, 5"	1	
	8220-097-002	Wire Assembly-Jumper, BRN.....	1	
	8220-098-003	Wire Assembly-Jumper, YEL.....	1	
	8220-101-005	Wire Assembly-GRY, 64"	1	
	8220-101-010	Wire Assembly-YEL/BLK, 62"	1	
	8220-101-011	Wire Assembly-YEL, 62"	1	
	8636-018-004	Fuse 2.5A	1	
	8640-276-003	Nut-Wire Connection, #73B, ORG	1	
	2	8711-008-002	Transformer-Control	1
		9544-041-002	Strap-beaded Tie.....	2
9029-135-003		Bracket-Switch, Airflow.....	1	
3	9558-029-004	Strip-Marker, Terminal	1	
4	9183-030-001	Filter-Line, EMI	1	
5	9376-299-003	Motor-Dryer, A.O. Smith	1	
6	9453-169-011	Pulley-Drive, Motor	1	
8	9631-403-005	Wire Assembly-High Voltage.....	1	
9	9857-140-001	Control Assembly, Ignition	1	
	8502-680-001	Label-CE Rotation	1	
	8502-684-002	Label-European Information.....	1	
	8507-230-003	Instructions-Transformer Connect	1	
	8514-027-005	Booklet-Owners	1	
	9506-252-001	Wiring-Label, Schematic	1	
	9506-253-001	Wiring-Label, Diagram	1	



Burner Housing And Gas Valve Parts 50Hz.

Key	Part Number	Description	Quantity
	9803-163-003	Burner Housing Assembly (Welded)	1
	9985-161-001	Bracket Assembly-Electrode Mounting	1
1	9381-009-005	Manifold Assembly 2 Port).....	1
	9425-069-020	Orfice-Plug, Main Burner, 3.9mm.....	2
2	9857-132-004	Valve Assembly-Gas	1
3	9732-162-001	Kit-VR86 Valve Flange	2
	9791-001-002	Adaptor Assembly-Gas inlet.....	1
	9000-043-001	Adaptor-3/4US to 3/4ISO Thred.....	1
	9000-044-002	Adaptor European Exhaust	1



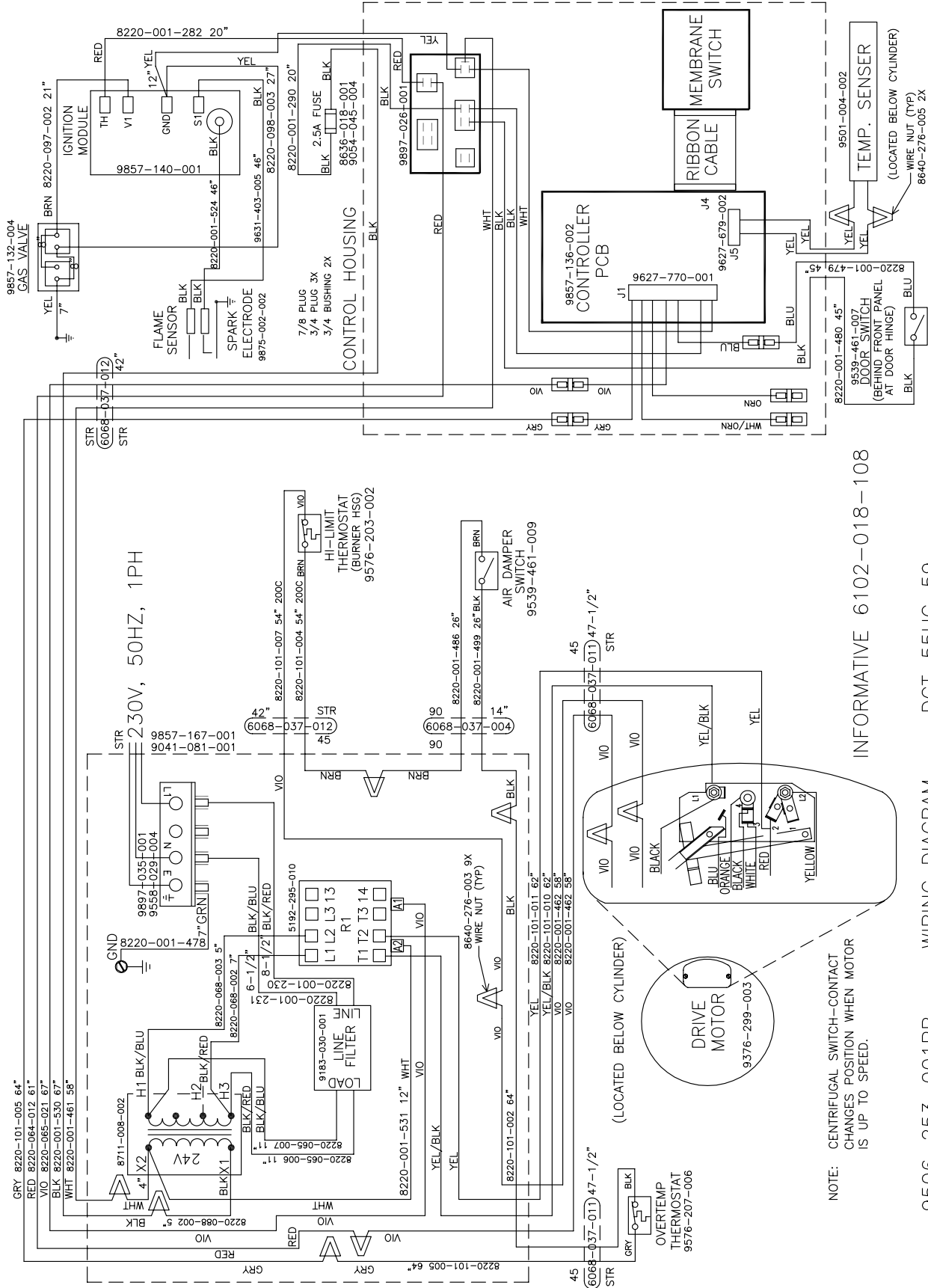


- NOTES:
1. DOOR SWITCH-N.O., CLOSED WHEN DOOR IS CLOSED.
 2. DRYER STARTS WHEN THE DOOR IS CLOSED, A CYCLE IS SELECTED, AND THE START BUTTON IS PUSHED. THERE IS AN AUTOMATIC COOL DOWN AT THE END OF THE CYCLE.
 3. REFER TO OWNER'S MANUAL FOR DESCRIPTION OF OPERATION AND REQUIREMENTS FOR HEATING CIRCUIT.

DCT_55HC_-59

SCHEMATIC

9506-252-001PR



INFORMATIVE 6102-018-108

NOTE: CENTRIFUGAL SWITCH-CONTACT CHANGES POSITION WHEN MOTOR IS UP TO SPEED.

9506-253-001PR WIRING DIAGRAM DCT_55HC_59